



NETBOX User's Manual

Trademark:

All trademarks are the property of their respective owners.

Version:

User's Manual V1.0 for NETBOX.

P/N: 3A222V700-000-G

Symbol description:



Caution : refers to important information that can help you to use NETBOX better, and tells you how to avoid problems.



Warning: indicating a potential risk of hardware damage or physical injury may exist.



WEEE:

The use of this symbol indicates that this product may not be treated as household waste. By ensuring this product is disposed of correctly, you will help prevent potential negative consequences for the environment and human health, which could otherwise be caused by inappropriate waste handling of this product. For more detailed information about recycling of this product, please contact your local city office, your household waste disposal service or the shop where you purchased this product.

**CAUTION
RISK OF EXPLOSION IF BATTERY IS REPLACED
BY AN INCORRECT TYPE
DISPOSE OF USED BATTERIES ACCORDING
TO THE INSTRUCTIONS**

© All rights reserved.

All trade names are registered trademarks of respective manufacturers listed.

All images are for reference only, please refer to the physical product for specific features.

Safety Notice :



Before using this product, please read the below safety notice carefully, this will help to extend the product's lifecycle, and work normally.

- When NETBOX is working, please make sure its ventilation system is working.
- The power adapter is dissipating heat during normal use, please be sure not to cover it and keep it away from your body to prevent discomfort or injury by heat exposure.
- Please use the power adapter that comes with the product's package, wrong power adapter may damage your device.
- Make sure all the peripherals are properly connected before using NET-BOX.
- This product should only be used in an environment with ambient temperatures between 0°C and 40°C.
- Always shut down the computer before installing or uninstalling the peripheral which does not support hot plug.
- Disconnect all peripherals before servicing or disassembling this equipment.
- Please do not disassemble this product by yourself, any disassembly not approved by the original manufacturer may result in malfunction, and void warranty.
- Risk of explosion if battery is replaced by an incorrect type, please dispose of used batteries according to the instructions.



TABLE OF CONTENTS

Chapter 1 Introduction of NETBOX

Product Overview	2
LED Indicator Introduction	4

Chapter 2 Placement and connection of NETBOX

Placement of NETBOX	
On the Desk	6
On the Display Back	6
Connection of NETBOX	
Connect the Antenna	8
Connect the Monitor	8
Connect the USB Devices	8
Connect the Network Cable	9
Connect the Power Cord	9

Chapter 3 Install Windows OS

Install Windows XP	11
Install Windows 7	15
Appendix - Display Features Notice	19



The NETBOX is a compact and easy to use desktop. It features all the desktop capabilities but with a slim body design which enables you to browse the internet in a relaxable and comfortable way.

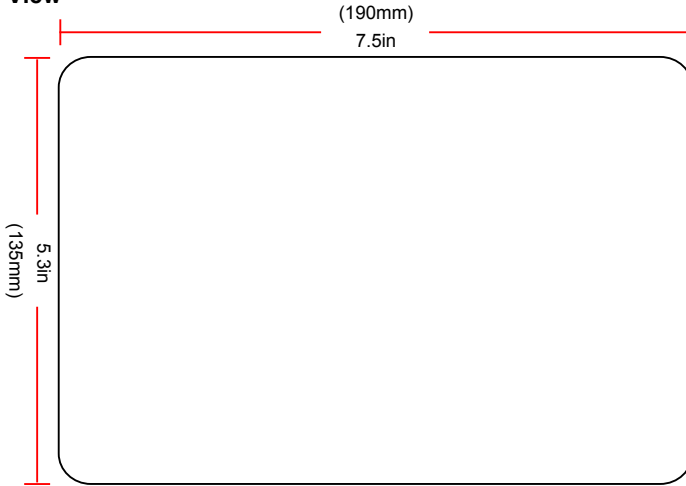
This chapter introduces the following information:

- Product Overview
- LED Indicator Introduction

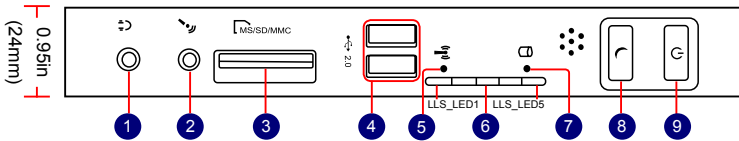
NETBOX features all the desktop capabilities but with a slim body design which enables you to browse the internet in a relaxable and comfortable way.

1-1 Product Overview

1. Top View

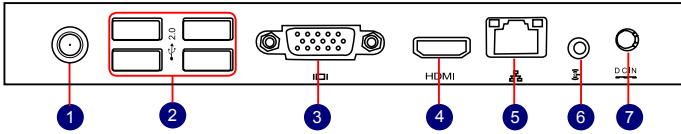


2. Front Side View



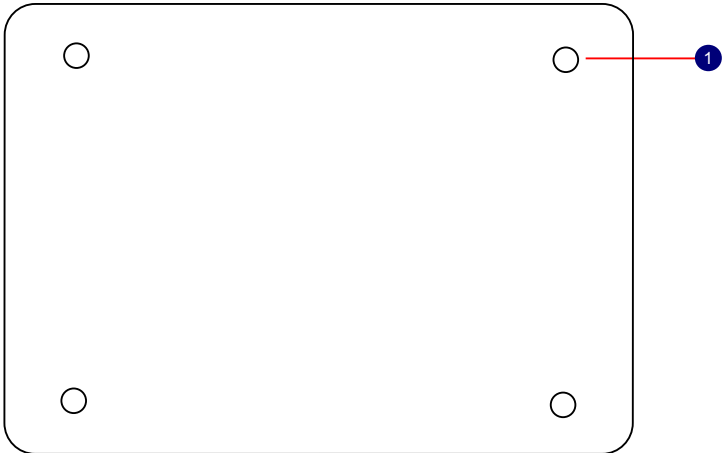
No.	Name	Description
1	Headphone Port	Connects to a headphone
2	Microphone In and S/PDIF In Port	Connects to a microphone or playback devices with optical connectors(3.5mm jack)
3	Multi-Function Card Reader	Supports SD/SDHC/MS/MS Pro/MMC memory cards
4	USB Ports	Connect to USB devices
5	WLAN_LED	Indicates Wireless connection states
6	LLS_LED	Indicates different system states
7	HDD_LED	Indicates hard disk states
8	Suspend Button with Integrated LED Indicator	Enter suspend mode in operating system Indicates suspend states
9	Power Button with Integrated LED Indicator	Turning the power on/off Indicates system states

3. Back Side View



No.	Name	Description
1	RF(Radio Frequency) Port	Connects to antenna
2	USB Ports	Connect to USB devices
3	Display Output Port(VGA)	Connects to display device
4	HDMI Port	Connects to HDMI audio and video
5	Network Port	Standard RJ-45 network port
6	Line Out and S/PDIF Out Port	Connects to powered analog speakers or recording devices with optical connectors(3.5mm jack)
7	Power Input Port	Connects to the power adapter

4. Bottom View



No.	Name	Description
1	Sheet Metal	NETDVD(optional accessory) or Magnet-Metal-Feet can magnetize them to seat firmly



There are four Magnet-Metal-Feet in the package. Just align them to the sheet metal on the bottom, then they can magnetize the NETBOX easily. The feet can seat and protect NETBOX when it is placed on the tabletop.

1-2 LED Indicator Introduction

Indication		Suspend_ LED	Power_ LED	HDD_ LED	WLAN_ LED	LLS_ LED1	LLS_ LED2	LLS_ LED3	LLS_ LED4	LLS_ LED5
Boot		-	Green	Red Blink	-	-	-	-	-	-
S0(Working Mode)		-	Green	-	-	Off	Off	Off	Off	Off
S1(Power-Saving Mode)		-	Green	Off	-	Off	Off	Off	Off	Off
S3(Standby Mode) [Press Suspend Button]		Red Blink	-	Off	-	Off	Off	Off	Off	Off
S4(Hibernation Mode)& S5(System Power Off Mode)		-	Off	Off	-	Off	Off	Off	Off	Off
CPU Initialization Error		-	-	-	-	Blue, Blink	-	-	-	-
DRAM Error		-	-	-	-	-	Blue, Blink	-	-	-
BIOS Boot Block Fail		-	-	-	-	-	-	-	Blue, Blink	-
BIOS Checksum Error		-	-	-	-	-	-	-	-	Blue, Blink
CMOS Cleared [Press Suspend Button for 4Sec.]		-	Red, Blink	-	-	-	-	-	-	-
HDD R/W Data		-	-	Red	-	-	-	-	-	-
Wireless Network Enable	Link to AP	-	-	-	Blue	-	-	-	-	-
	No Link to AP	-	-	-	Blink (Once every 5Sec.)	-	-	-	-	-
	Data Transmission	-	-	-	Blink (Indefinite interval)	-	-	-	-	-



The LLS_LEDs status in this table only show BIOS error message.



In this chapter, the placement and the connection of some necessary peripherals will be introduced.

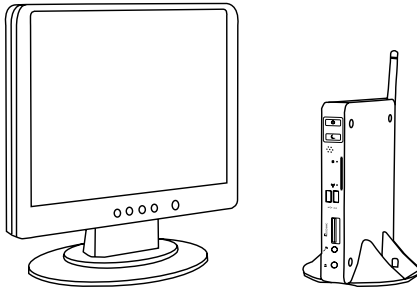
This chapter includes the following information:

- Placement of NETBOX
- Connection of NETBOX

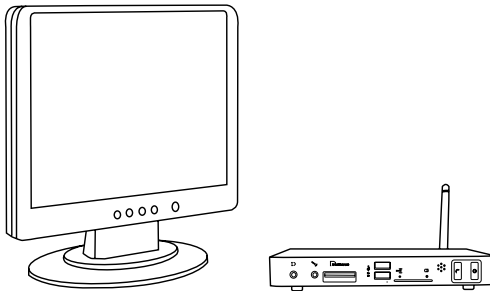
2-1 Placement of NETBOX

1. On the Desk

You can install your NETBOX in the mount directly.



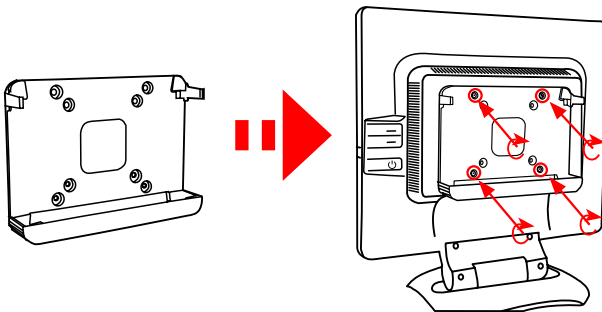
If there is enough space on your desk, you can simply put your NETBOX with Magnet-Metal-Feet on the tabletop.



2. On the Display Back

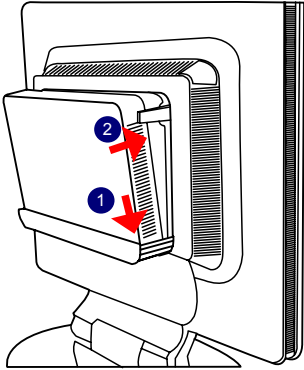
This is the best space-saving way.

2.1. Use four screws(M4X10mm) to fasten the bracket onto the display back.

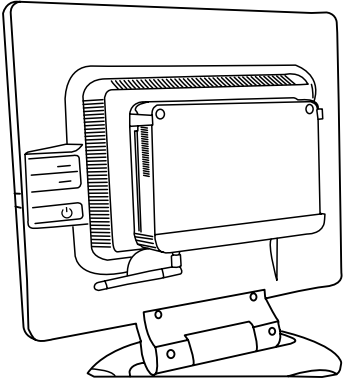


To install this bracket, your display must follow VESA75/VESA100 standard. The two groups of holes on your display have different space between, and they help you easily fasten the bracket onto your display.

2.2. Fit the NETBOX into the bracket with power button locating at the top for easy touch.



2.3. After that, you can connect the antenna to your NETBOX.

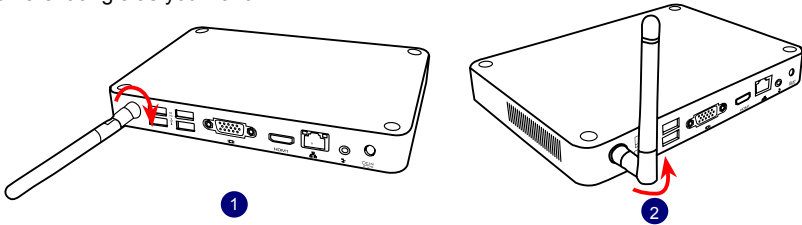


Remove the antenna before lifting up the NETBOX straight to take it out.

2-2 Connection of NETBOX

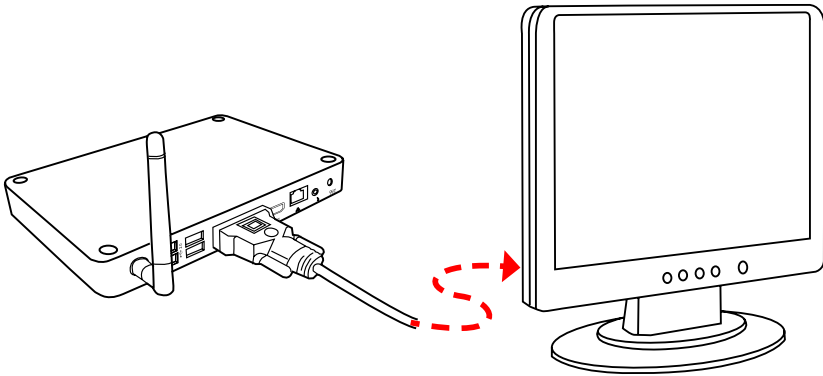
1. Connect the Antenna

Connect the antenna to the RF port of the NETBOX. You can fold the antenna and rotate it in different angle as you want.



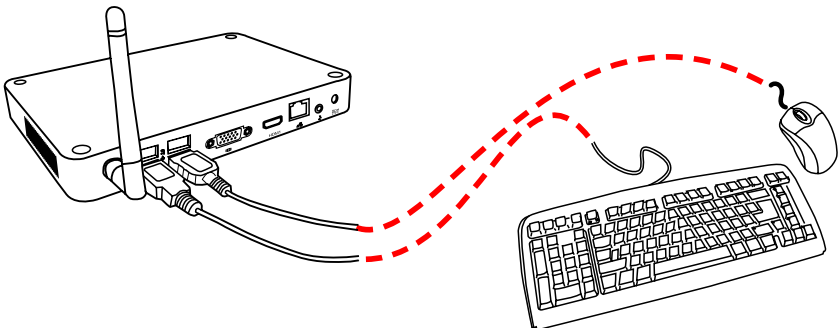
2. Connect the Monitor

Connect a monitor to the NETBOX through VGA connector or HDMI connector.



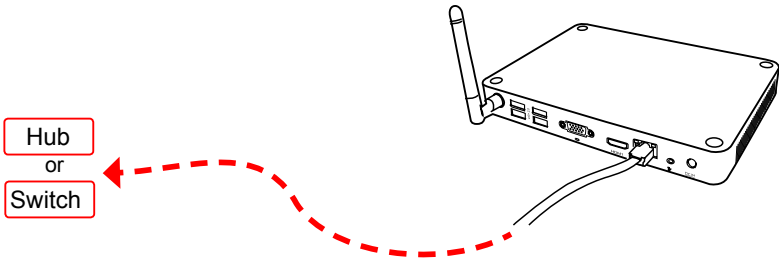
3. Connect the USB Devices

Connect USB devices to the USB ports of the NETBOX, for example, mouse and keyboard.



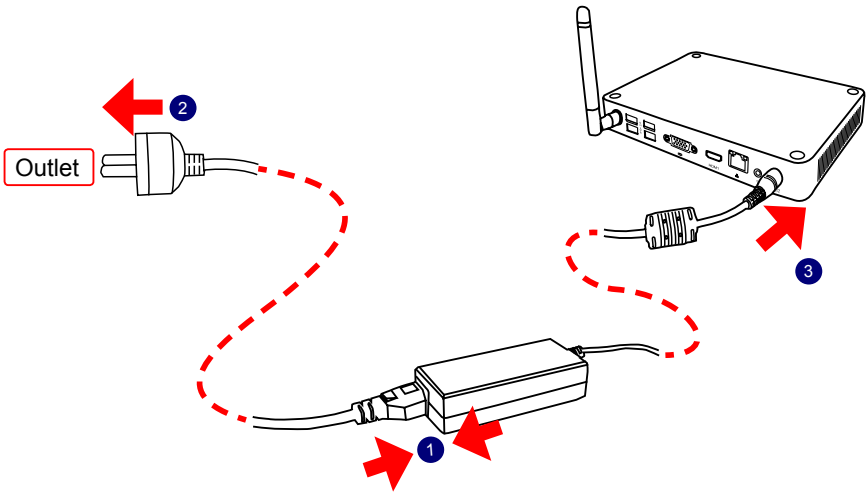
4. Connect the Network Cable

Connect LAN cable to the RJ-45 port, with the other end connected to a hub or switch.



5. Connect the Power Cord

Connect the power adapter to the power input port of the NETBOX, and push the power button to start it.



The power adapter is dissipating heat during normal use, please make sure not to cover it and keep it away from your body to prevent discomfort or injury from heat exposure.



3

This chapter introduces the following information:

- Install Windows XP
- Install Windows 7
- Appendix - Display Features Notice

Make sure you have these ready :

1. NETDVD. (It is an optional accessory. If there is no NETDVD in this package, you need other purchase an external USB DVD-ROM drive.)
2. NETBOX driver CD. (In this package)
3. Windows XP Install CD/Windows 7 Install CD. (Other purchase)



The build-in graphics chipset of this Nettop only support upto Directx 9, can not up to Directx 10 or later, which is recommended by Microsoft WHQL, but you can install Operating System(Windows 7).

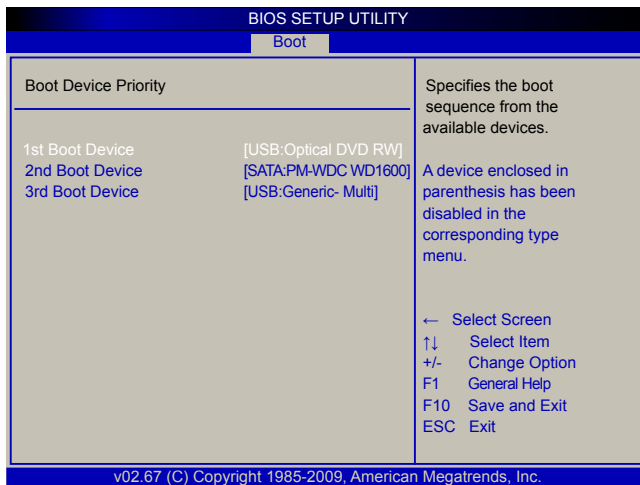
Before we continue :

- Your NETBOX power is off.
- Connect the NETDVD or USB DVD-ROM drive.

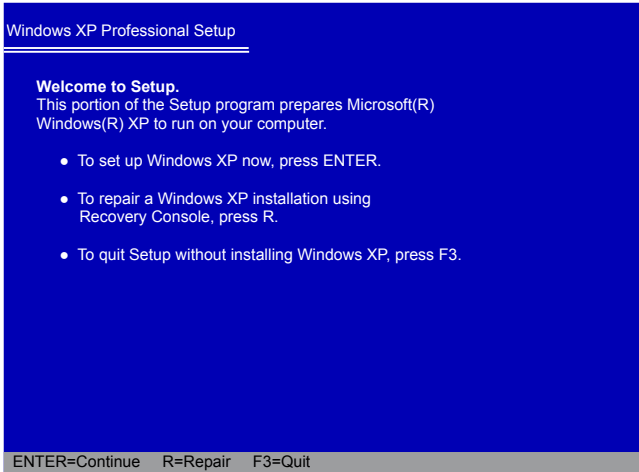
3-1 Install Windows XP

1. Install Windows XP

- 1.1. Push power on button to turn on your computer, then press key to enter BIOS Setup.
- 1.2. Put the Windows XP Install CD into the NETDVD or USB DVD-ROM drive.
- 1.3. Select and go to the “Boot” menu, enter “Boot Device Priority”, set the “1st Boot Device” to “USB: Optical DVD RW”, press <F10> key to save change and exit BIOS.



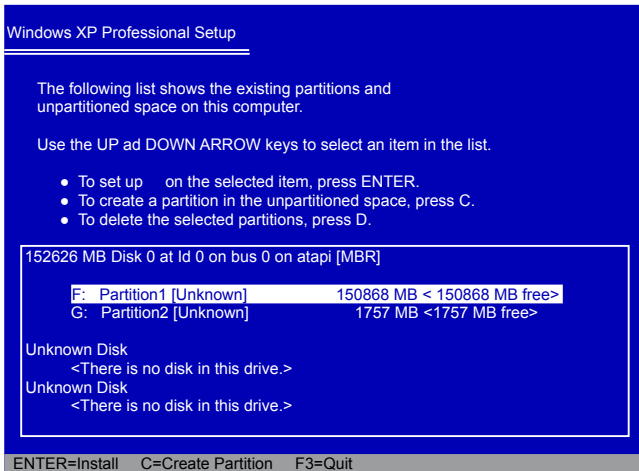
1.4. The computer will reboot, and it will start installing Windows XP Operating System.



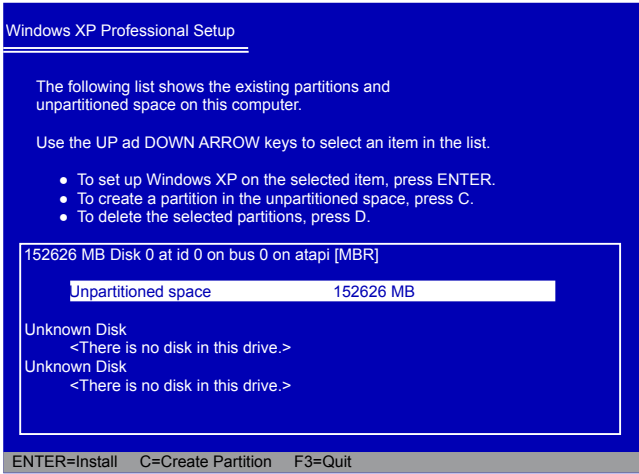
1.5. Press <Enter> key to continue the installation.

1.6. Press <F8> key to accept the Licensing Agreement and continue.

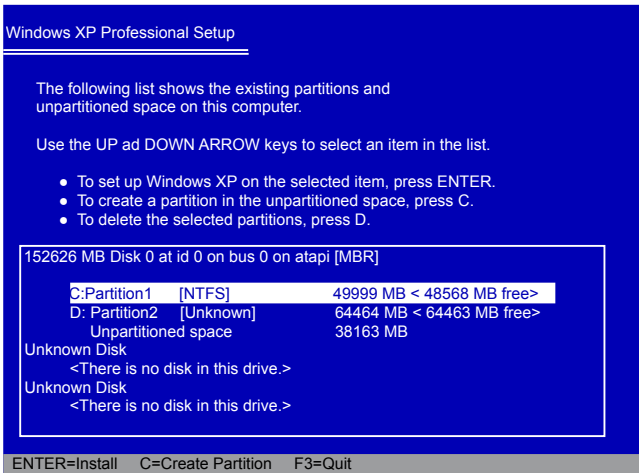
1.7. Windows will display the hard disk partitions of your system. If previously there were other systems (such as Linux) installed, you may need to press [D] key to delete them. When all partitions are clean, setup will display the biggest size of your hard drive as depicted in step 1.8.



1.8. In this biggest hard disk size screen, you can press [C] to create partitions as you wish, assign them C:, D: or E: logical drive names.



1.9. In this example, we are creating a 50GB partition C: for the system. Press <Enter> to install Windows. The Windows XP install processes will ask you to format your hard disk, then copy files...etc. Follow the installation steps until the whole process is completed.



2. Install Drivers in Windows XP

- 2.1. When the Windows XP is completely installed, you have to install the necessary drivers before using the NETBOX. Take out the Windows XP Install CD from the DVD-ROM drive, and put the NETBOX driver CD inside.
- 2.2. Waiting for a few seconds, the main menu will be displayed, click "Driver" to enter the Driver menu shown as below:

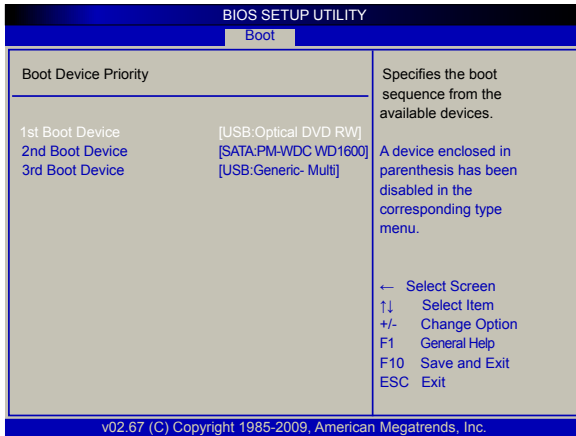


- 2.3. Use these options to install all the drivers for your system. You must click "Intel Chipset Driver" to install it first. After that, you can click "One Click Setup" to install all the other drivers, or you can click on each individual driver to install it manually.
- 2.4. After all the drivers are installed, you need to restart your NETBOX, then you can start using it.

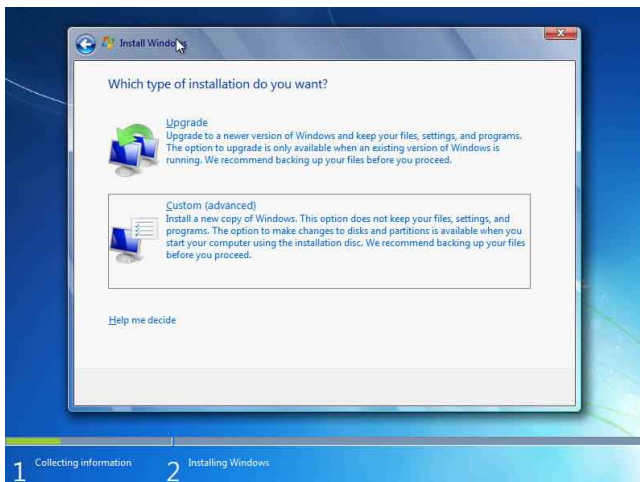
3-2 Install Windows 7

1. Install Windows 7

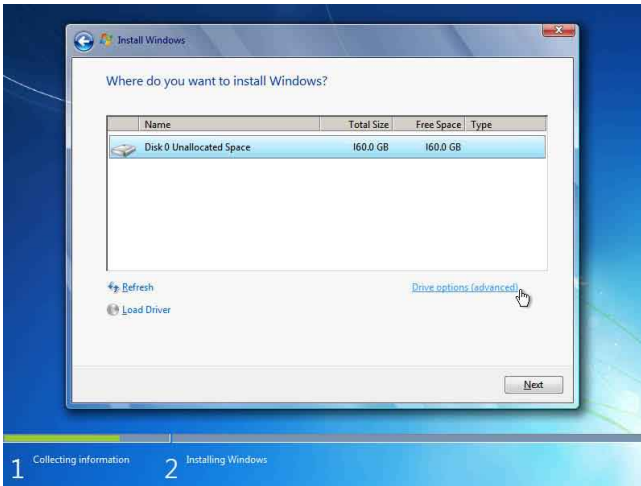
- 1.1. Push power button to turn on your computer, then press key to enter BIOS Setup.
- 1.2. Put the Windows 7 Install CD into the NETDVD or USB DVD-ROM drive.
- 1.3. Select and go to the “Boot” menu, enter “Boot Device Priority”, set the “1st Boot Device” to “USB: Optical DVD RW”, press <F10> key to save change and exit BIOS.



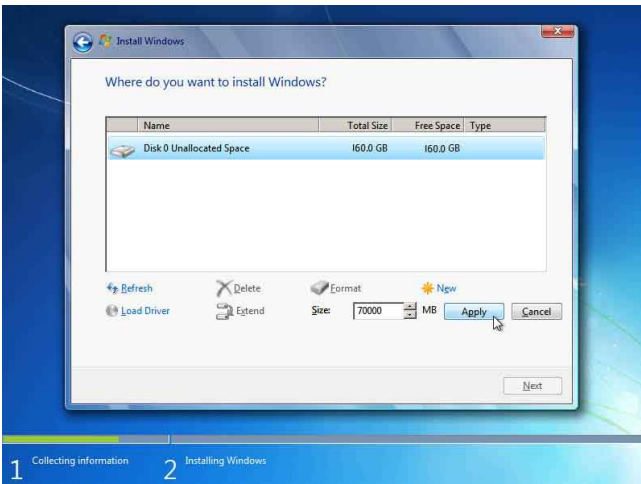
- 1.4. The computer will reboot, and it will start loading files for installing Windows 7 Operating System.
- 1.5. After that, it will start Windows and come out a “Install Windows” dialog box to set the “Language to install”, “Time and current format” and “ Keyboard or input method”. Click “Next” to continue and click “Install now” button to start the setup.
- 1.6. When the license terms appear, select to accept and click “Next” to continue.
- 1.7. It then asks you to select the installation type. Click “Custom (advanced)” to install a new copy of Windows.



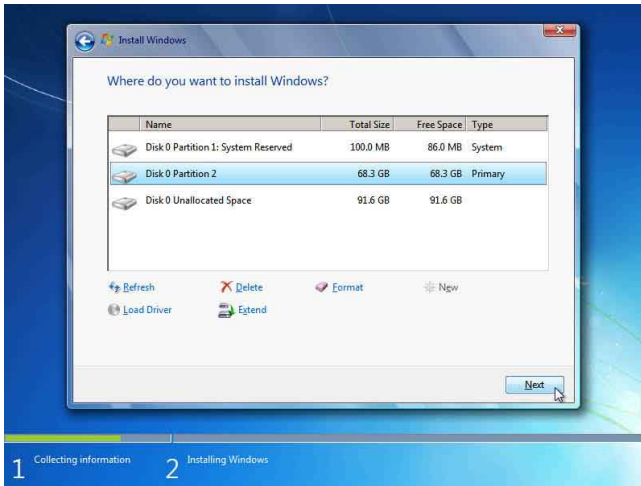
- 1.8. Later the setup will display the hard disk partitions of your system. If there were other systems (such as Linux) installed previously, you need select them and click “Drive options (advanced)” to delete them. When all partitions are clean, setup will display the biggest size of your hard drive.



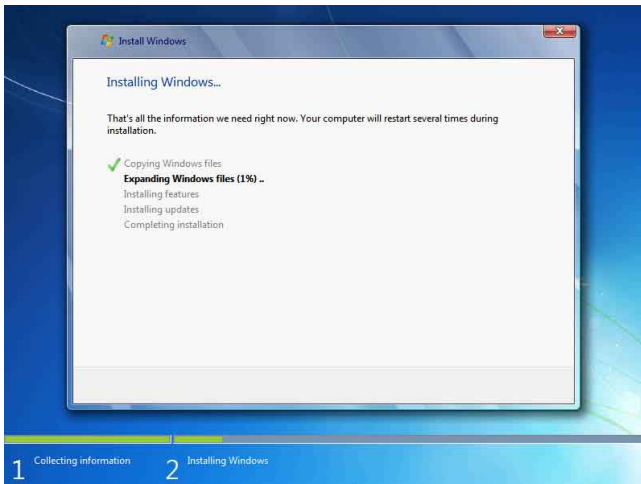
- 1.9. In this biggest hard disk size screen, you can click “New” button to create partitions as you need. In this example, we will create a 70GB partition to install Windows, and click “Apply”.



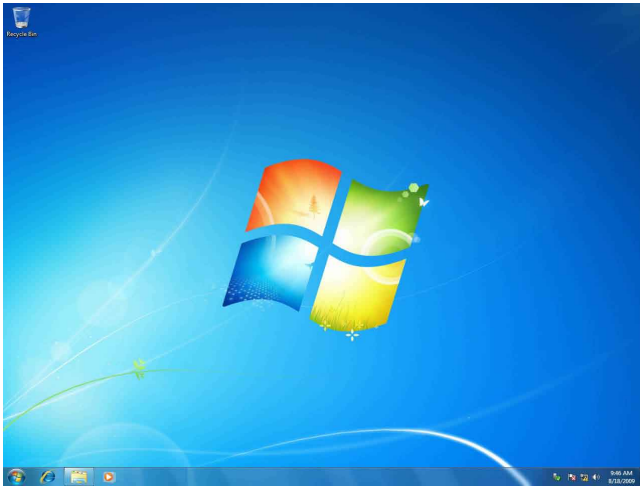
To ensure that all Windows features work correctly, Windows might create an additional partition for system files, so you will see a system reserved partition. Select the 70GB partition and click "Next" to continue.



1.10. From this step we start to install windows 7 into your hard disk, including copying Windows files, expanding Windows files...etc. During the installation, your computer will restart several times.



- 1.11. When the installation is completed, setup will prepare your compute for the first use. Then you can follow steps to select system settings, create an account, set a password...etc, until the whole process is completed and enter Windows 7 operating system.



2. Install Drivers in Windows 7

- 2.1. When the Windows 7 is completely installed, you have to install the necessary drivers before using the NETBOX. Take out the Windows 7 Install CD from the USB DVD-ROM drive, and put the driver CD inside.
- 2.2. Waiting for a few seconds, the main menu will be displayed, click "Driver" to enter the Driver menu shown as below:

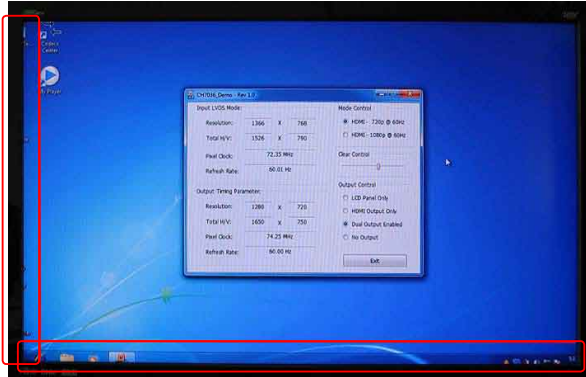


- 2.3. Use these options to install all the drivers for your system. You must click "Intel Chipset Driver" to install it first. After that, you can click "One Click Setup" to install all the other drivers, or you can click on each individual driver to install it manually.
- 2.4. After all the drivers are installed, you need to restart your NETBOX, then you can start using it.

Appendix - Display Features Notice

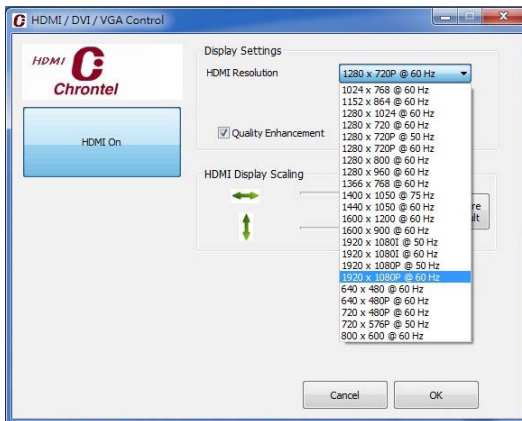
1. Chrontel HDMI Display Settings and Scaling

Some HDMI TV will display overscan mode as below, you can adjust it by using the Chrontel HDMI Tool which appears after installing “Chrontel Control Driver”, otherwise, it can also be used for the display resolution settings.

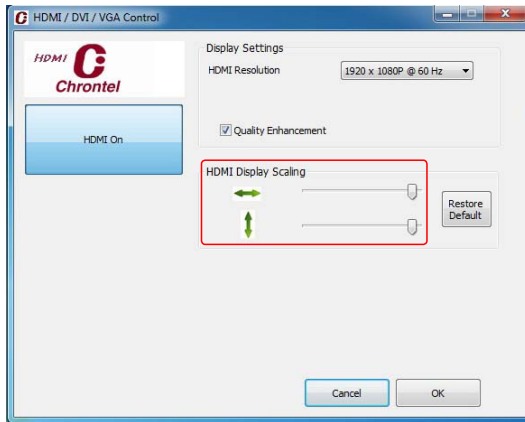


HDMI port support hotplug detecting, and the resolution support is base on the reading EDID information!

1.1. The resolution can be chosen from the drop-down list.



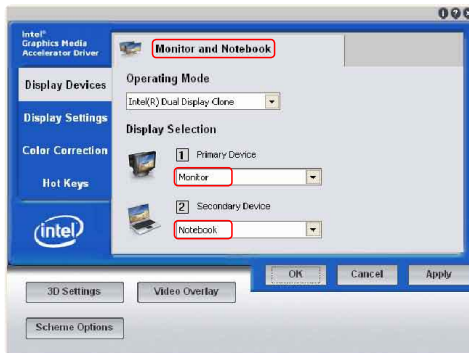
1.2. You can adjust the scaling by dragging the lever, to get the fitting scale of display.



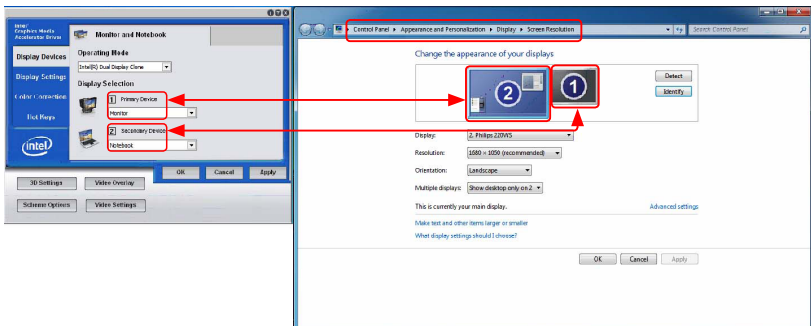
Note: Click the “HDMI On” button in the left can close the HDMI output, you can reopen it by re-plugging the HDMI cable.

2. Display Instruction in OS(Windows XP/Vista/7)

2.1. In the Intel® Graphics Media Accelerator Driver, the VGA(D-sub) port is defined as “Monitor”, and the HDMI port is defined as “Notebook”.



2.2. In Windows 7 system, the output sequence in the Intel® Graphics Media Accelerator Driver and the OS display properties are nonmatched, the “Primary Device” match for “2”, and the Secondary Device match for “1”.

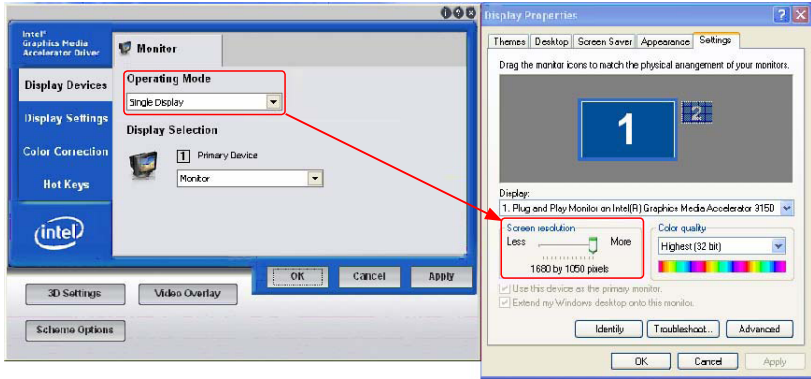


2.3. For the VGA user, after installing VGA Driver, and rebooting into system, the VGA default Operating Mode is "Intel(R) Dual Display Clone", and the "Screen resolution" is held to "1280 x 720". If you want to adjust the screen resolution, please follow the steps below to select the "Single Display" in "Operating Mode".

Step 1. Double click the Intel® Graphics Media Accelerator Driver icon in the system tray.



Step 2. In the "Display Devices" tab, select "Single Display" from the "Operation Mode" drop-down list. Then you can adjust the "Screen resolution" as you want.



3. HD Video Play Notice

If you want to play HD videos, the .WMV, .MOV and .VOB formats are recommended.

Statement:

This device complies with part 15 of the FCC Rules. Operation is subject to the following two conditions: (1) This device may not cause harmful interference, and (2) this device must accept any interference received, including interference that may cause undesired operation.

Warning:**FEDERAL COMMUNICATIONS COMMISSION INTERFERENCE STATEMENT**

This equipment has been tested and found to comply with the limits for a Class B digital device, pursuant to part 15 of the FCC Rules. These limits are designed to provide reasonable protection against harmful interference in a residential installation. This equipment generates, uses and can radiate radio frequency energy and, if not installed and used in accordance with the instructions, may cause harmful interference to radio communications. However, there is no guarantee that interference will not occur in a particular installation. If this equipment does cause harmful interference to radio or television reception, which can be determined by turning the equipment off and on, the user is encouraged to try to correct the interference by one or more of the following measures:

- Reorient or relocate the receiving antenna.
- Increase the separation between the equipment and receiver.
- Connect the equipment into an outlet on a circuit different from that to which the receiver is connected.
- Consult the dealer or an experienced radio/ TV technician for help.

Caution:

Any changes or modifications not expressly approved by the grantee of this device could void the user's authority to operate the equipment.

RF exposure warning:

This equipment must be installed and operated in accordance with provided instructions and the antenna(s) used for this transmitter must be installed to provide a separation distance of at least 20 cm from all persons and must not be co-located or operating in conjunction with any other antenna or transmitter. End-users and installers must be provide with antenna installation instructions and transmitter operating conditions for satisfying RF exposure compliance.